

BECE INTEGRATED SCIENCE 2014

PAPER 2 QUESTIONS

© 2024 Ghana5.com. All rights reserved.

ACKNOWLEDGEMENT: The West African Examination Council - for the BECE past questions used in this document.

1 1/4 HOURS

[PART 1](#)

[PART 2](#)

PART I

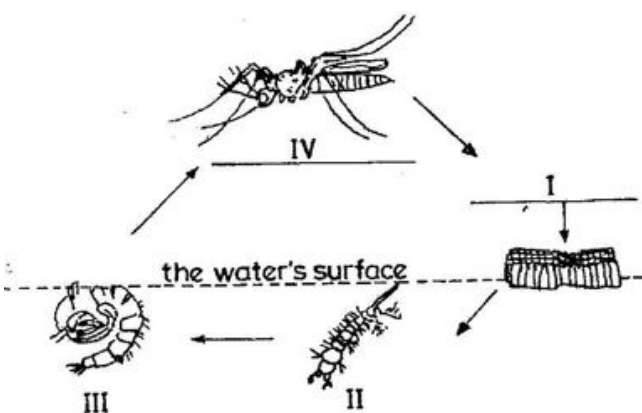
[40 marks]

Answer Question **all** of Question 1.

1.

(a) The diagrams below represent the stages in the life cycle of a mosquito

Study the diagrams carefully and answer the questions that follow.



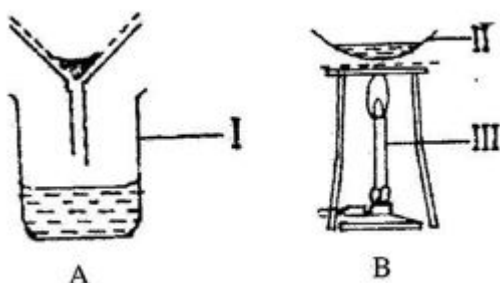
(i) Name **each** of the stages labeled I, II, III and IV.

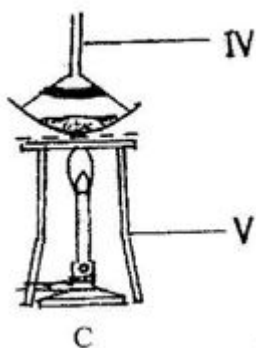
(ii) State how stage II obtains oxygen

(iii) State **two** methods of controlling **each** of the stages labeled III and IV.

(b) The diagrams below are different laboratory set-ups used in the separation of mixtures.

Study the diagrams carefully and answer the questions that follow.





(i) Name each of the parts labeled I, II, III, IV and V.

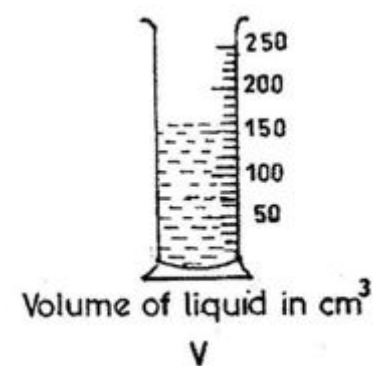
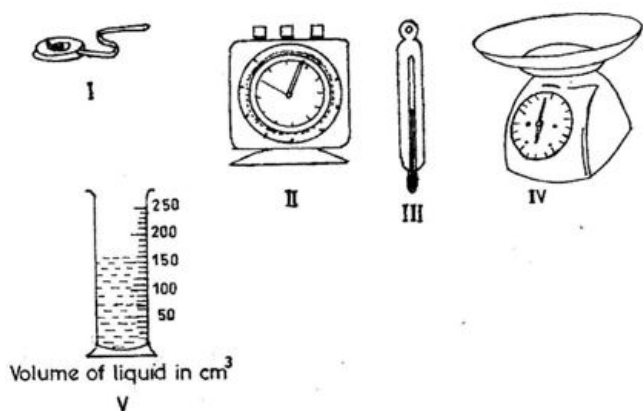
(ii) Name the separation method represented by **each** diagram.

(iii) Which of the set-ups is used to obtain clear water from muddy water?

(iv) Which of the set-ups is used to obtain salt from salt solution?

(c) The diagrams below show some instruments used in the laboratory.

Study the diagrams carefully and answer the questions that follow.



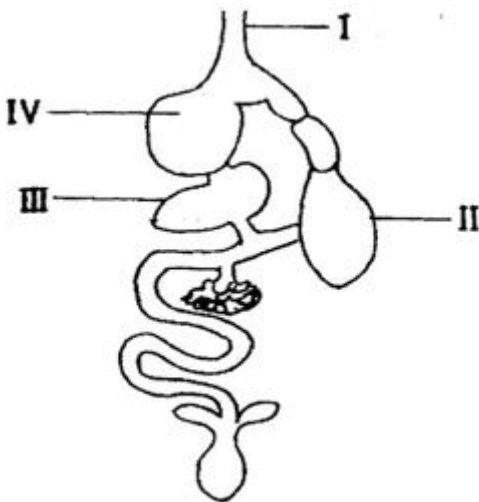
(i) Identify **each** of the instruments labeled I, II, III, IV and V.

(ii) State **one** use of **each** of the instruments labeled I, II, III and IV.

(iii) Read and record the volume of the liquid in the instrument labeled V.

(d) The diagram below shows the digestive system of a class of farm animals.

Study the diagrams carefully and answer the questions that follow.



- (i) Name **each** of the parts labeled I, II, III and IV.
- (ii) State **one** function each of the parts labeled II and IV.
- (iii) Name **two** farm animals that possess this type of digestive system.
- (iv) Mention **two** diseases which affect this class of farm animals.

[\[BACK TO TOP\]](#)

PART II

[60 marks]

Answer **four** questions only from this section.

2. (a) (i) Name the two elements that combine to form water.
- (ii) Write a balanced chemical equation to show how the water is formed from the named elements
- (b) State **two** ways of maintaining a balance in an ecosystem.
- (c) (i) What is a *fertile* soil?
- (ii) State **two** factors that cause loss of soil fertility.
- (d) Classify the following items as *magnetic* or *non-magnetic* substance: wood, steel blade, rubber and glass jar.
3. (a) (i) What is *germination* of seed?
- (ii) State **two** conditions necessary for the germination of seed.
- (b) State **four** methods used in identifying farm animals

(c) Explain why it is easier to cut a piece of yam with a sharp knife than with a blunt knife

(d) State **three** differences between a *metal* and a *non-metal*.

4. (a)

(i) What is *debeaking*?

(ii) Give two reasons why debeaking in poultry birds is important.

(b)

(i) A steel needle carefully placed on the surface of water floats. What type of force made the steel needle to float?

(ii) Name **three** substances that could be added to the water to make the steel needle to sink.

(c)

(i) Explain why gold is preferred to iron in the making of jewellery.

(ii) State **one** way of preventing rusting.

(d)

(i) State **two** elements of climate.

(ii) Name the equipment used to measure **each** of the elements stated in (i) above.

5. (a)

(i) What is *refraction of light*?

(ii) Sketch a diagram to show the path of a light ray when it travels from air to glass.

(b) Explain why it is difficult to separate iron and sulphur mixture after strong heating.

(c)

(i) Give **two** example of digestive enzymes produced in humans.

(ii) For **each** of the enzymes given in (i), name the part of the human body where the enzyme is produced.

(d) List **four** methods of applying fertilizers to crops.

6. (a) Consider the substances listed below:

carbon dioxide, gold, bronze, iron, oxygen and ink.

From the list, select the substance that:

- (i) supports burning
 - (ii) is used as jewellery;
 - (iii) is used for making statues
- (b)
- (i) Name **two** diseases associated with the circulatory system of humans.
 - (ii) State **one** way of preventing **each** of the diseases named in (i)
- (c) Give two examples of **each** of:
- (i) **major** plant nutrients;
 - (ii) **minor** plant nutrients.
- (d)
- (i) State **two** properties of a good thermometric liquid.
 - (ii) Give **two** examples of a good thermometric liquid.

~ END ~

Get more of such in the paid members' area.

Published by
**Upper Primary &
JHS**

All rights reserved

Register and **upgrade** to access more downloads and also lots of tutorials, revision notes and specially-designed quizzes!!

**Jesus.. whom they
killed by hanging
on a tree. Him God
raised on the
third day..**

Acts 10: 38-40